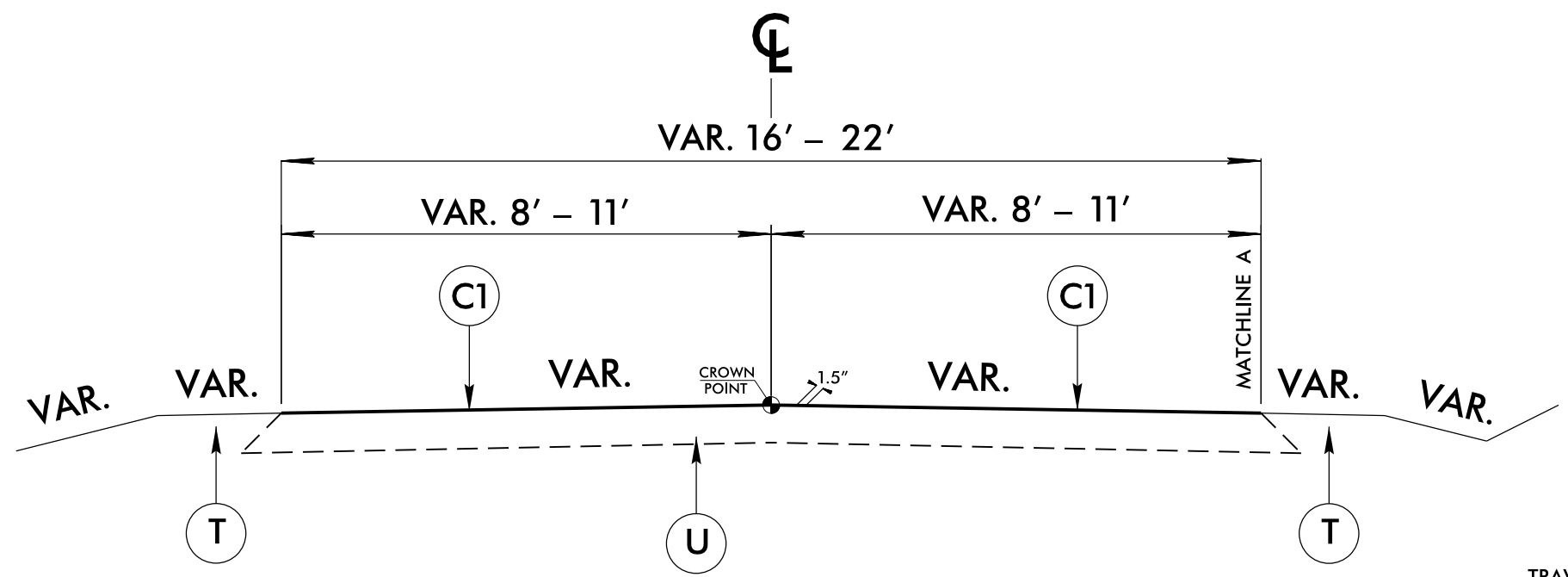


PROJECT NO.	SHEET NO.	TOTAL NO.
2022CPT.11.03.20051	1	2

**SUMMARY OF QUANTITIES**

Project No.	County	Map No.	Route	Route Name	From Description	To Description	Mile Post From	Mile Post To	TYP NO	LANE TYPE	LENGTH		WIDTH		0106000000-E	1220000000-E	1245000000-E	1297000000-E	1308000000-E	1330000000-E	1519000000-E	1575000000-E	1704000000-E	2815000000-N	2830000000-N	2845000000-N	7288000000-E	7300000000-E	7324000000-N	7444000000-E	7456000000-E	6084000000-E	
											BORROW EXCAVATION	INCIDENTAL STONE BASE	SHOULDER RECONSTRUCTION	1.5" MILLING	0-1.5" MILLING	INCIDENTAL MILLING	SURFACE COURSE, \$9.5B	ASPHALT BINDER FOR PLANT MIX	PATCHING EXISTING ASPHALT	ADJ. OF DROP INLETS	ADJ. OF MANHOLES	ADJ. OF METER OR VALVE BOX	PAVED TRENCHING	UNPAVED TRENCHING	JUNCTION BOX (STANDARD SIZE)	INDUCTIVE LOOP	LEAD-IN CABLE	SEED & MULCHING					
												MI	FT	CY	TON	SMI	SY	SY	SY	TON	TON	TON	EA	EA	EA	LF	LF	EA	LF	LF	AC		
2022CPT.11.03.20051	Ashe	1	SR 1003	Idlewild Rd	SR 1172	US 221	5.48	7.27	1	2WU	1.79	20	358		36	3.58			250	1,993	134	399											1.30
2022CPT.11.03.20051	Ashe	2	SR 1109	Mill Creek rd	SR 1106	SR 1110	0.00	1.92	1	2WU	1.92	18	384		38	3.84				2,007	134											1.40	
2022CPT.11.03.20051	Ashe	3	SR 1110	Zion Methodist Ch Rd	SR 1112	SR 1109	0.00	0.88	1	2WU	0.88	18	176		18	1.76				920	62										0.64		
2022CPT.11.03.20051	Ashe	4	SR 1112	W Laurel Knob Rd	SR 1110	SR 1113	2.44	2.62	1	2WU	0.18	18	36		10	0.36				188	13										0.13		
2022CPT.11.03.20051	Ashe	5	SR 1113	Laurel Knob Rd	NC 194	SR 1112	0.00	1.35	1	2WU	1.35	18	270		27	2.70				1,411	95										0.98		
2022CPT.11.03.20051	Ashe	6	SR 1125	West Buffalo Rd	SR 1194	SR 1133	4.06	5.27	1	2WU	1.21	18	242		24	2.42		250	1,212	81	242										0.88		
2022CPT.11.03.20051	Ashe	7	SR 1149	Mount Jefferson Rd	NC 163	Begin 3 Lane Section	0.00	0.87	1	2WU	0.87	22	174		17	1.74		350	1,065	71	107	1	1	2							0.63		
2022CPT.11.03.20051	Ashe	8	SR 1149	Mount Jefferson Rd	Begin 3 Lane Section	End 3 Lane Section	0.87	1.42	2	MU	0.55	36	28		10	0.55	11,616		1,102	74		1	1	2	50	50	1	1,075	50		0.40		
2022CPT.11.03.20051	Ashe	9	SR 1149	Mount Jefferson Rd	End 3 Lane	US 221	1.42	2.06	1	2WU	0.64	22	128		13	1.28		125	350	784	53	78	1	1	2						0.47		
2022CPT.11.03.20051	Ashe	10	SR 1149	Mount Jefferson Rd	US 221	US 221 BUS	2.12	2.51	3	MU	0.39	48				10,982			1,042	70		1	1	2									
2022CPT.11.03.20051	Ashe	11	SR 1151	Oakwood Rd	SR 1149	EOM	0.00	0.84	1	2WU	0.84	18	167		17	1.67			100	837	56	125									0.61		
2022CPT.11.03.20051	Ashe	12	SR 1152	Mount Jefferson State Park Rd	US 221	SR 1149	0.00	0.07	1	2WU	0.07	22	14		10	0.14			125	86	6	13									0.05		
2022CPT.11.03.20051	Ashe	13	SR 1152	Mount Jefferson State Park Rd	SR 1149	MT Jefferson State Park Gate Entrance	0.08	1.33	1	2WU	1.25	18	250		25	2.50			250	1,306	87	196									0.91		
2022CPT.11.03.20051	Ashe	14	SR 1195	Helen Blevins Rd	SR 1248	EOM	0.00	0.90	1	2WU	0.90	18	180		18	1.80			941	63	94										0.65		
2022CPT.11.03.20051	Ashe	15	SR 1211	Milt Houck Rd	SR 1112	END MAINT	0.00	0.48	1	2WU	0.48	16	96		10	0.96			446	30											0.35		
2022CPT.11.03.20051	Ashe	16	SR 1212	Sexton Rd	SR 1149	END MAINT	0.00	0.10	1	2WU	0.10	18	20		10	0.20			105	7											0.07		
2022CPT.11.03.20051	Ashe	17	SR 1253	Wade E. Vannoy Dr	US 221 BUS	END MAINT	0.00	0.34	1	2WU	0.34	20	68		10	0.68		100	395	26		1	1	1							0.25		
2022CPT.11.03.20051	Ashe	18	SR 1262	Mountain Valley Dr	SR 1212	END MAINT	0.00	0.24	1	2WU	0.24	18	48		10	0.48			251	17											0.17		
2022CPT.11.03.20051	Ashe	19	SR 1283	Ashe County High School Dr	US 221	SR 1149	0.00	0.07	4	MU	0.07	60	14			0.14			350	224	15	22									0.05		
2022CPT.11.03.20051	Ashe	20	SR 1500	Silas Creek Rd	Bridge # 0044 over N. Fork New River	SR 1523	0.00	2.31	1	2WU	2.31	18	462		46	4.62			300	2,415	162	241										1.68	
2022CPT.11.03.20051	Ashe	21	SR 1513	N Fork New River Rd	SR 1573	Bridge # 0044 over N. Fork New River	0.00	0.60	1	2WU	0.60	18	120		12	1.20			300	575	39	86									0.44		
2022CPT.11.03.20051	Ashe	22	SR 1513	N Fork New River Rd	SR 1500	SR 1500	0.60	3.15	1	2WU	2.55	18	510		51	5.10				2,666	179										1.85		
2022CPT.11.03.20051	Ashe	23	SR 1523	Silas Creek Rd	SR 1500	SR 1539	0.00	3.01	1	2WU	3.01	18	602		10	6.02				3,147	211										2.19		
2022CPT.11.03.20051	Ashe	24	SR 1563	Clifton Rd	SR 1567	SR 1573	0.00	1.74	1	2WU	1.74	18	348		35	3.48				1,819	122										1.27		
2022CPT.11.03.20051	Ashe	25	SR 1639	Howell Rd	SR 1500	EOM	0.00	0.21	1	2WU	0.21	18	42		4	0.42			220	15	33										0.15		
<b>TOTAL FOR PROJECT NO. 2022CPT.11.03.20051</b>												<b>24.48</b>		<b>4,736</b>	<b>461</b>	<b>47.64</b>	<b>22,598</b>	<b>125</b>	<b>2,725</b>	<b>27,155</b>	<b>1,819</b>	<b>1,637</b>	<b>5</b>	<b>5</b>	<b>9</b>	<b>50</b>	<b>50</b>	<b>1</b>	<b>1075</b>	<b>50</b>	<b>17.52</b>		

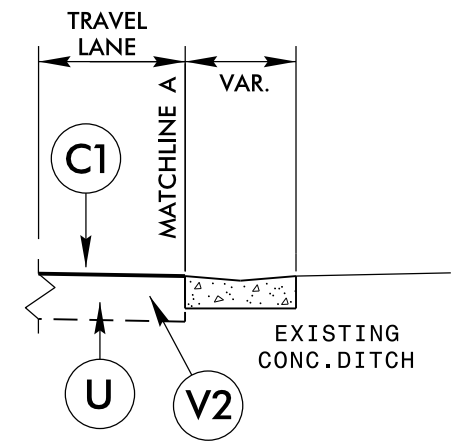




### TYPICAL SECTION NO. 1

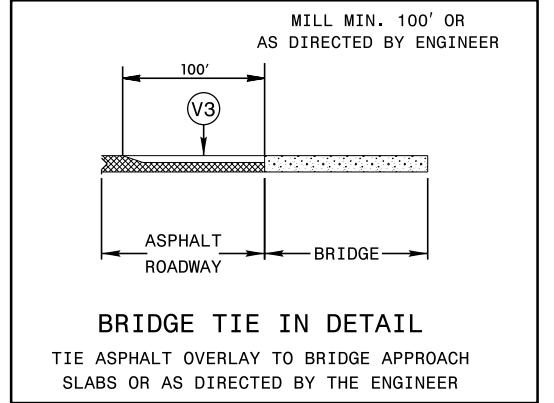
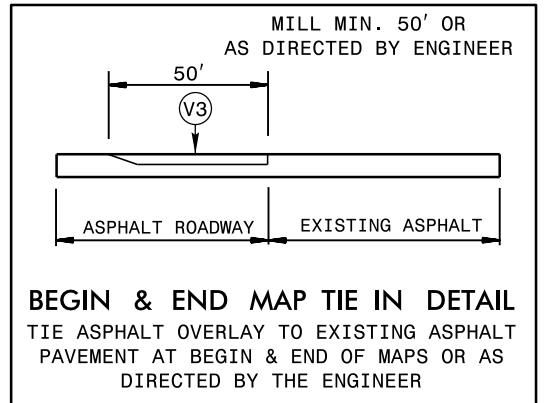
- MAP 1 – IDLEWILD RD FROM SR 1172 TO US 221
- MAP 2 – MILL CREEK RD FROM SR 1106 to SR 1110
- MAP 3 – ZION METHODIST CH RD FROM SR 1112 TO SR 1109
- MAP 4 – W. LAUREL KNOB RD FROM SR 1110 TO SR 1113
- MAP 5 – LAREL KNOB RD. FROM NC 194 TO SR 1112
- MAP 6 – WEST BUFFALO RD FROM SR 1194 TO SR 1133
- MAP 7 – MOUNT JEFFERSON RD FROM NC 163 TO BEGIN 3-LN
- MAP 9 – MOUNT JEFFERSON RD FROM END 3-LN TO US 221\*\*\*
- MAP 11 – OAKWOOD RD FROM SR 1149 TO EOM
- MAP 12 – MOUNT JEFFERSON STATE PARK RD FROM US 221 TO SR 1149
- MAP 13 – MOUNT JEFFERSON STATE PARK RD FROM SR 1149 TO STATE PARK GATE ENTRANCE
- MAP 14 – HELEN BLEVINS RD FROM SR 1248 TO EOM
- MAP 15 – MILT HOUCK RD FROM SR 1112 TO EOM
- MAP 16 – SEXTON RD FROM SR 1149 TO EOM
- MAP 17 – WADE E. VANNOY DR FROM US 221 BUS TO EOM
- MAP 18 – MOUNTAIN VALLEY DR FROM SR 1212 TO EOM
- MAP 20 – SILAS CREEK RD FROM BR.#44 OVER N. FORK NEW RIVER RD TO SR 1523
- MAP 21 – N FORK NEW RIVER RD FROM SR 1573 TO BR.#44 OVER N. FORK NEW RIVER RD
- MAP 22 – N FORK NEW RIVER RD FROM SR 1500 TO SR 1500
- MAP 23 – SILAS CREEK RD FROM SR 1500 TO SR 1539
- MAP 24 – CLIFTON RD FROM SR 1567 TO SR 1573
- MAP 25 – HOWELL RD FROM SR 1500 TO EOM

PAVEMENT SCHEDULE	
C1	PROP. APPROX. 1½" ASPHALT CONCRETE SURFACE COURSE, TYPE S9.5B, AN AVERAGE RATE OF 165 LBS. PER SQ. YD.
T	SHOULDER RECONSTRUCTION
U	EXISTING PAVEMENT
V2	MILLING OF EXISTING ASPHALT PAVEMENT AT VAR. DEPTH OF 0" - 1½"
V3	INCIDENTAL MILLING (See Tie in Detail)



### INSET NO. 1A \*\*\*

\* INSET NO. 1A IS RIGHT SIDE ONLY  
MAP 9 – SR 1149 FROM MP 1.79 TO 1.82



**ASHE COUNTY  
SECONDARY ROADS  
ASPHALT RESURFACING**

REVISIONS	INIT.	DATE

N.C. DEPARTMENT of TRANSPORTATION  
DIVISION of HIGHWAYS  
DIVISION ELEVEN

SCALE: N/A DATE: 10/14/2021  
PREPARED BY: DON & DLH  
REVIEWED BY:  
REVIEWED BY:

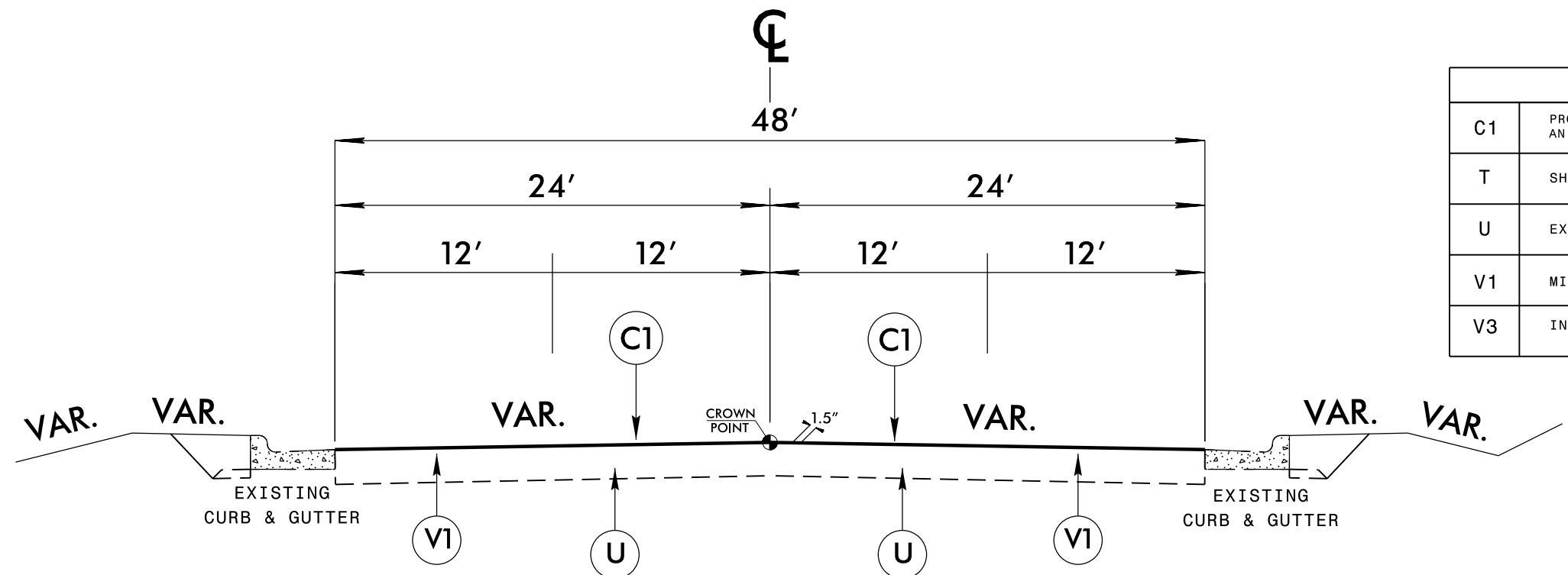
8/17/99

\$\$\$\$\$SYTIME\$\$\$\$\$  
\$\$\$\$\$>MIDNIGHT\$\$\$\$\$  
\$\$\$\$\$<MIDNIGHT\$\$\$\$\$  
\$\$\$\$\$>MIDNIGHT\$\$\$\$\$  
\$\$\$\$\$<MIDNIGHT\$\$\$\$\$

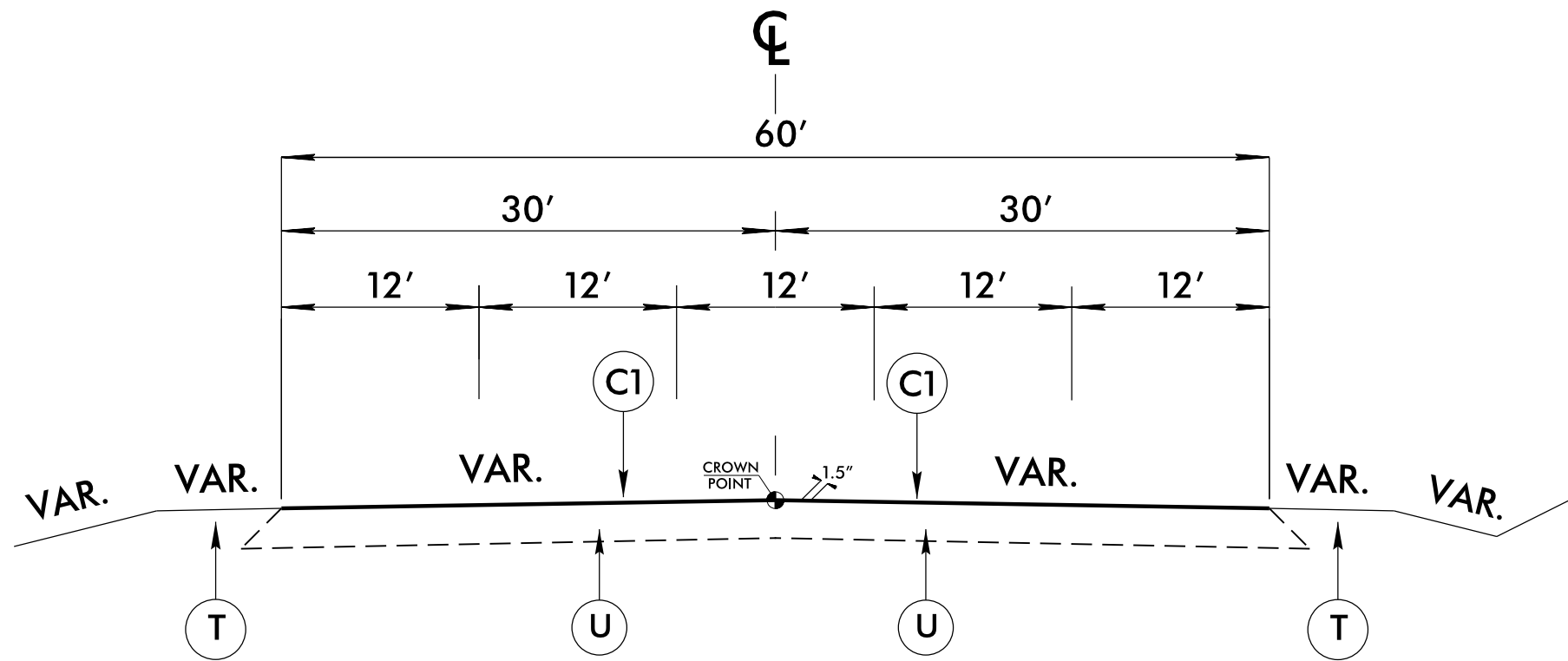
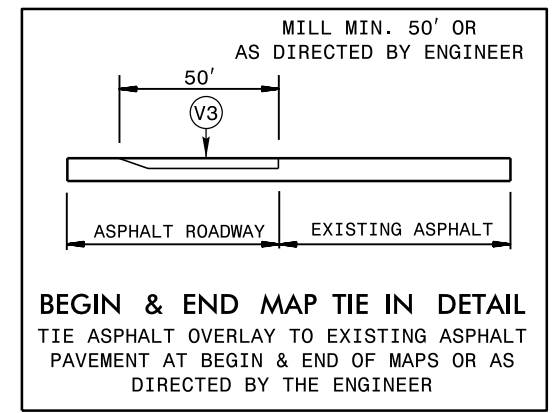


8/17/99

PAVEMENT SCHEDULE	
C1	PROP. APPROX. 1½" ASPHALT CONCRETE SURFACE COURSE, TYPE S9.5B, AN AVERAGE RATE OF 165 LBS. PER SQ. YD.
T	SHOULDER RECONSTRUCTION
U	EXISTING PAVEMENT
V1	MILLING OF EXISTING ASPHALT PAVEMENT AT DEPTH OF 1½"
V3	INCIDENTAL MILLING (See Tie in Detail)



**TYPICAL SECTION NO. 3**  
 MAP 10 – MOUNT JEFFERSON RD FROM US 221 TO US 221 BUS



**TYPICAL SECTION NO. 4**  
 MAP 19 – Ashe County High School Dr. FROM US 221 TO SR 1149

NOTE: TYPICALS ARE NOT TO SCALE

<b>ASHE COUNTY SECONDARY ROADS ASPHALT RESURFACING</b>		
REVISIONS	INIT. DATE	
N.C. DEPARTMENT of TRANSPORTATION DIVISION of HIGHWAYS DIVISION ELEVEN		SCALE: N/A DATE: 10/14/2021 PREPARED BY: DON & DLH REVIEWED BY:

SYSTEMS DIVISION



# ASHE COUNTY

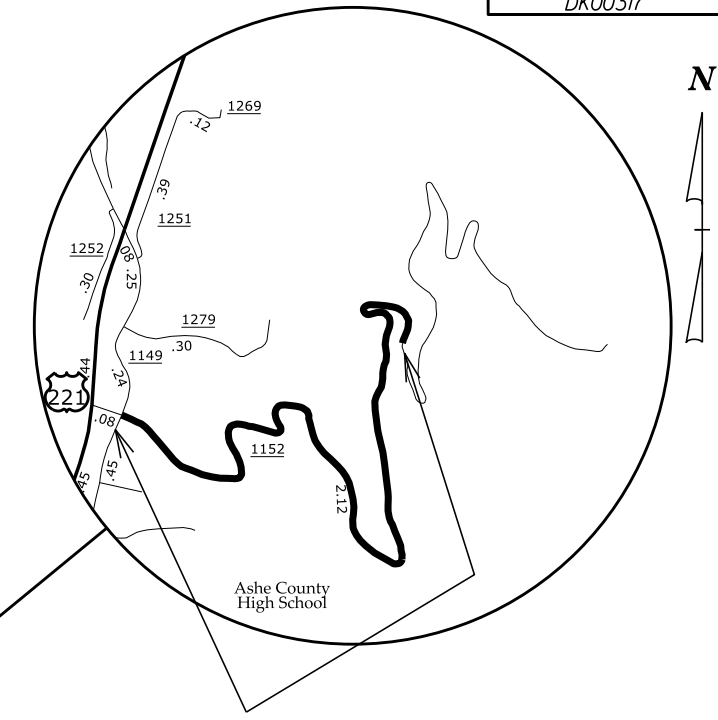
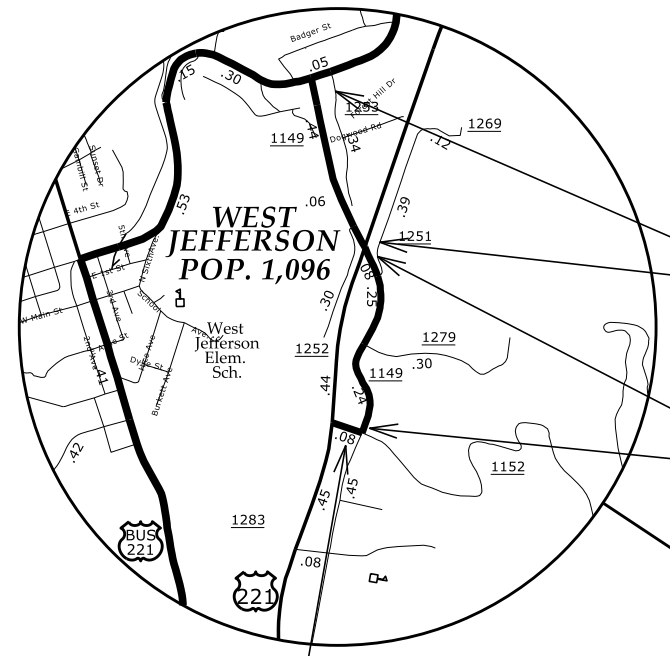
2022 RESURFACING  
MAPS # 7, #8, #9, #10, #11, #12, #13 AND #14

## MAP #10

★ SR 1149 MOUNT JEFFERSON RD. – (0.39mi.)  
(FROM US 221 TO US 221 BUS.)

## MAP #9

★ SR 1149 MOUNT JEFFERSON RD. – (0.64mi.)  
(FROM END 3 LANE SECTION TO US 221)

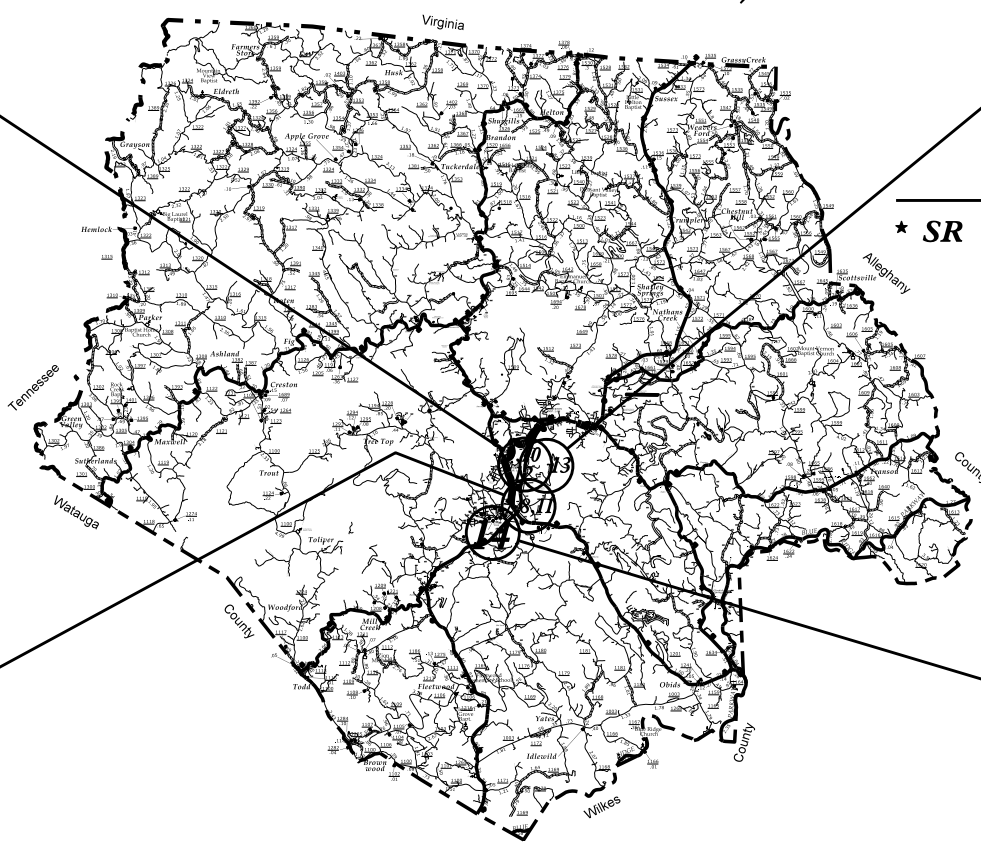


## MAP #12

★ SR 1152 MOUNT JEFFERSON STATE PARK RD. – (0.07mi.)  
(FROM US 221 TO SR 1149)

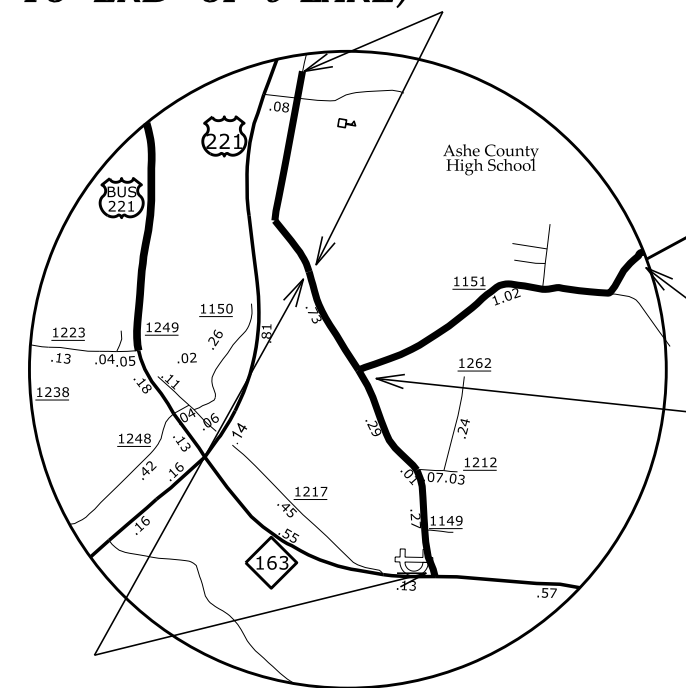
## MAP #8

★ SR 1149 MOUNT JEFFERSON RD. – (0.55mi.)  
(FROM BEGIN 3 LANE SECTION TO END OF 3 LANE)



## MAP #13

★ SR 1152 MOUNT JEFFERSON STATE PARK RD. – (1.25mi.)  
(FROM SR 1149 TO THE PARK ENTRANCE GATE)

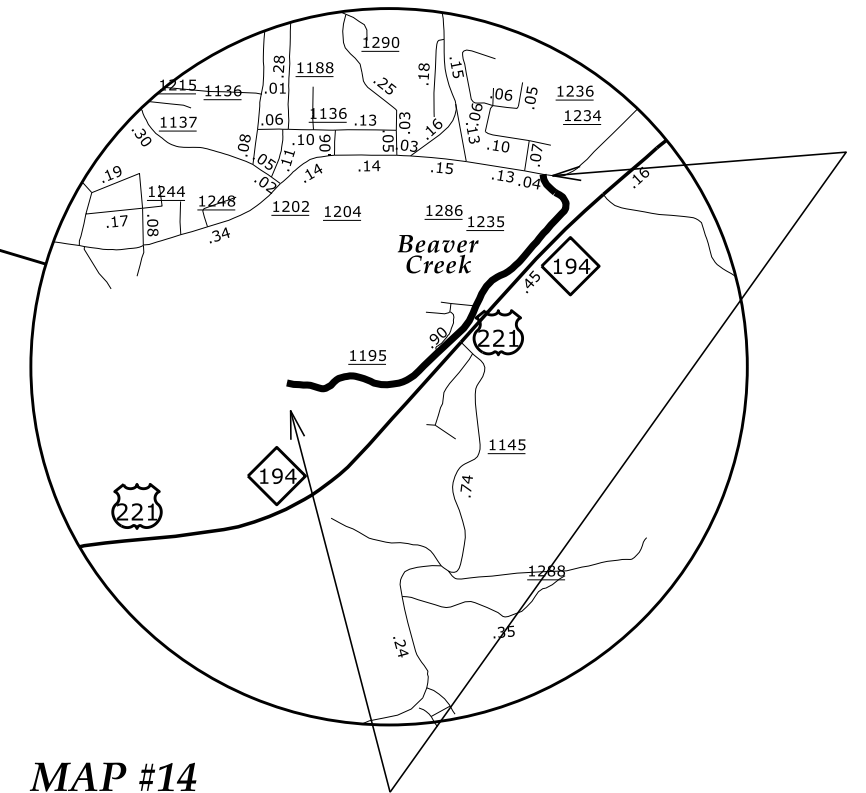


## MAP #7

★ SR 1149 MOUNT JEFFERSON RD. – (0.87mi.)  
(FROM NC 163 TO US BEGIN OF 3 LANE)

## MAP #11

★ SR 1151 OAKWOOD RD. – (0.84mi.)  
(FROM SR 1149 TO EOM)

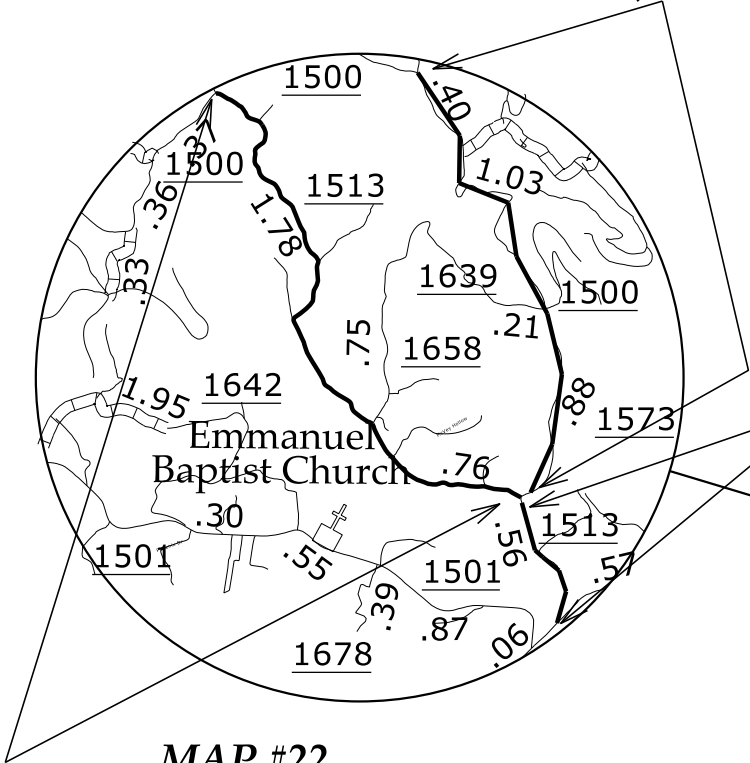


## MAP #14

★ SR 1195 HELEN BLEVINS RD. – (0.90mi.)  
(FROM SR 1248 TO EOM)

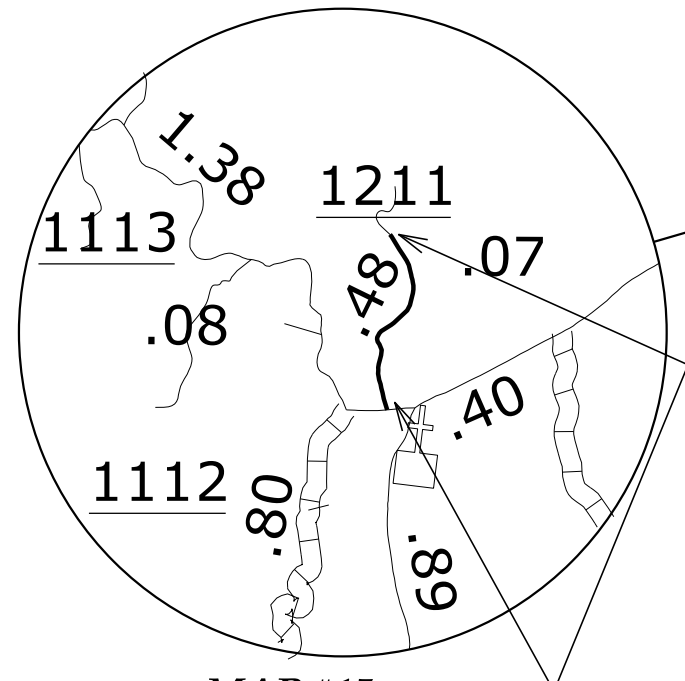
MAP #20

\* SR 1500 SILAS CREEK RD. - (2.31mi.)  
(FROM BRIDGE #0044 TO SR 1523)



MAP #22

\* SR 1513 N FORK NEW RIVER RD. - (2.55mi.)  
(FROM SR 1500 TO SR 1500)



MAP #15

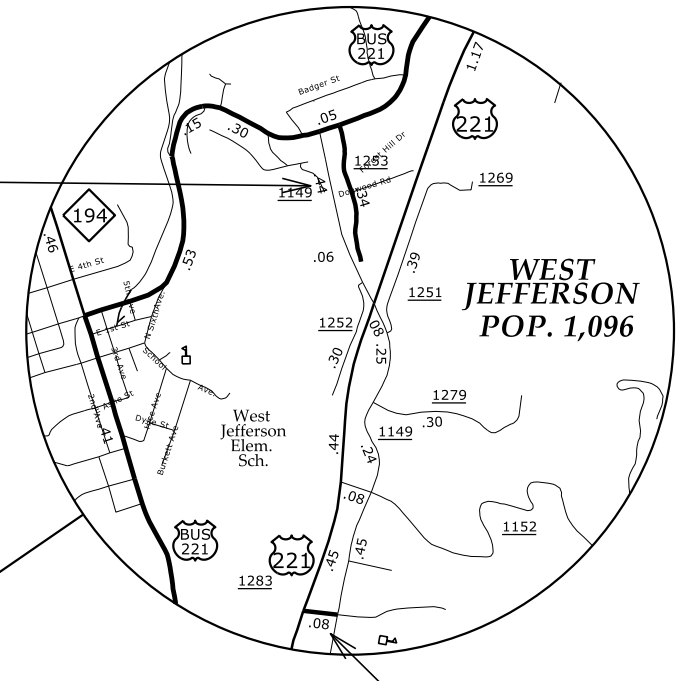
\* SR 1211 MILT HOUCK RD. - (0.48mi.)  
(FROM SR 1112 TO EOM)

# ASHE COUNTY

2022 RESURFACING  
MAPS # 15, #16, #17, #18, #19, #20, #21, AND #22

MAP #17

\* SR 1253 WADE E. VANNOY DR. - (0.34mi.)  
(FROM US 221 BUS TO EOM)

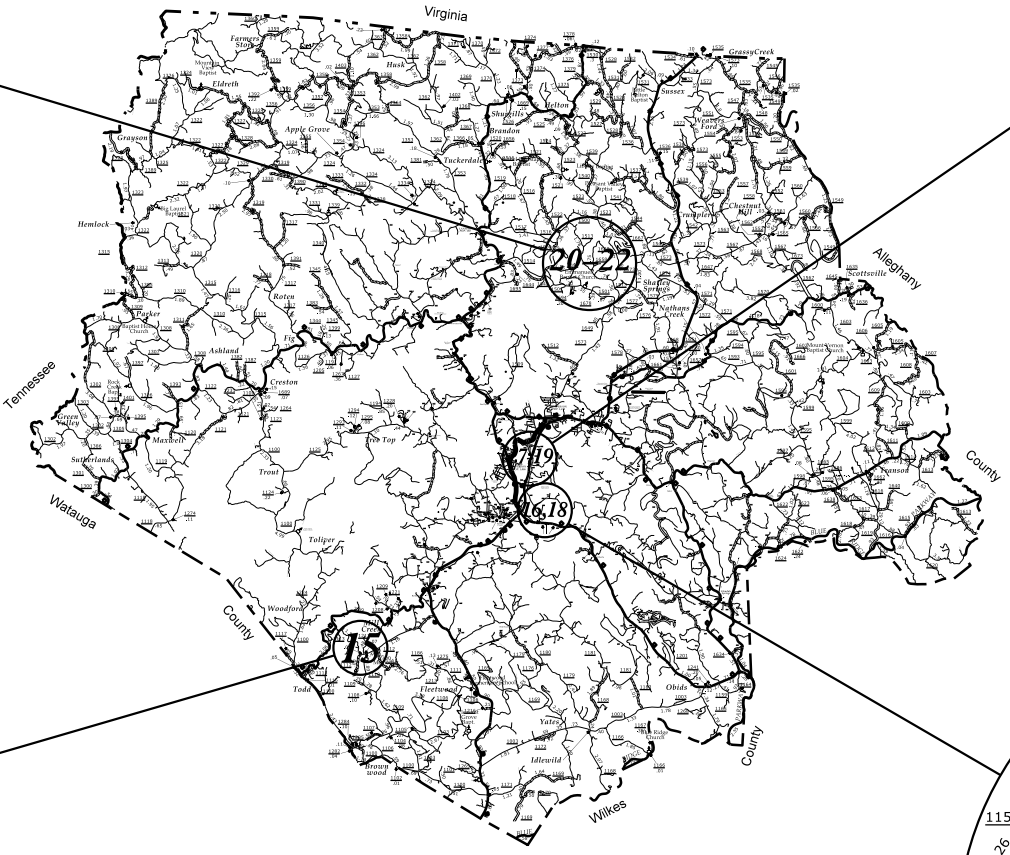


MAP #19

\* SR 1283 ASHE COUNTY HIGH SCHOOL DR. - (0.07mi.)  
(FROM US 221 TO SR 1149)

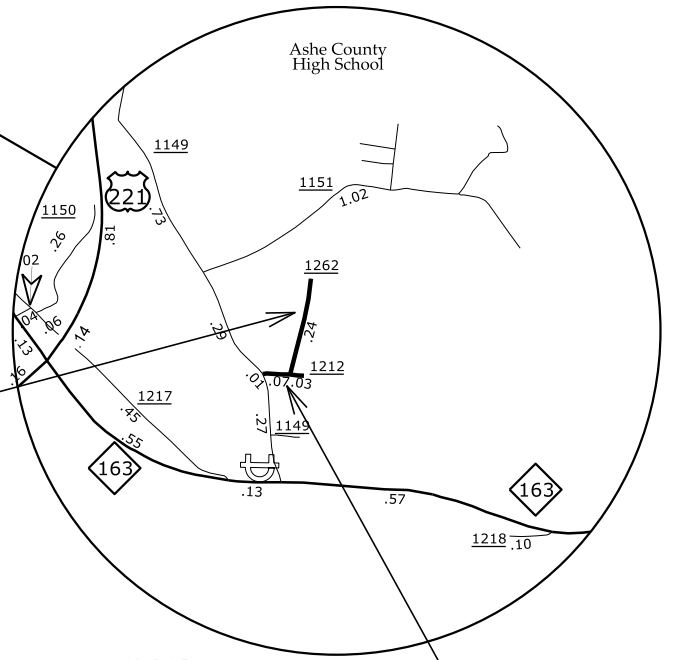
MAP #21

\* SR 1513 N FORK NEW RIVER RD. - (0.60mi.)  
(FROM SR 1573 TO BRIDGE #0044)



MAP #18

\* SR 1262 MOUNTAIN VALLEY DR. - (0.24mi.)  
(FROM SR 1212 TO EOM)



MAP #16

\* SR 1212 SEXTON RD. - (0.10mi.)  
(FROM SR 1149 TO EOM)

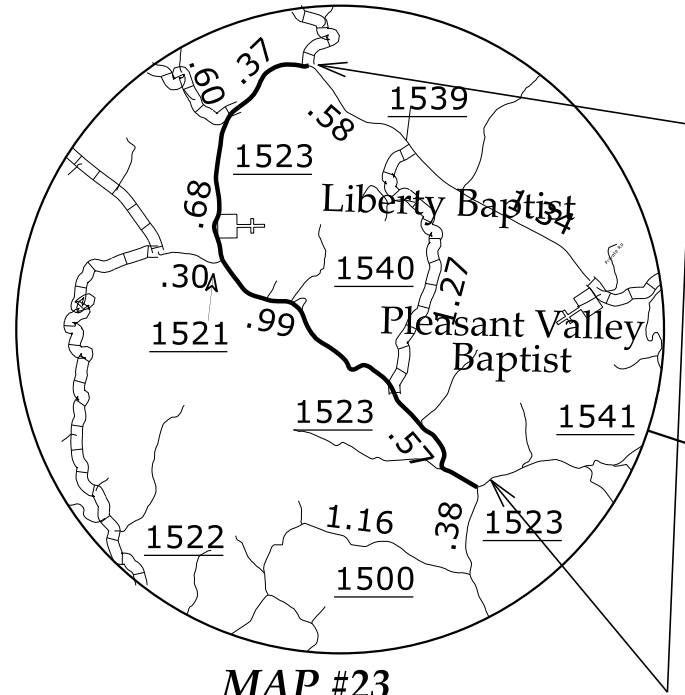
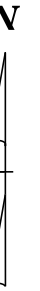


SYSTEMS & SOLUTIONS  
CONSULTANTS  
INCORPORATED  
1000 W. MAIN ST.  
ASHEBORO, NC 27804  
TEL: 704.291.1111  
WWW.S&S-CO.COM



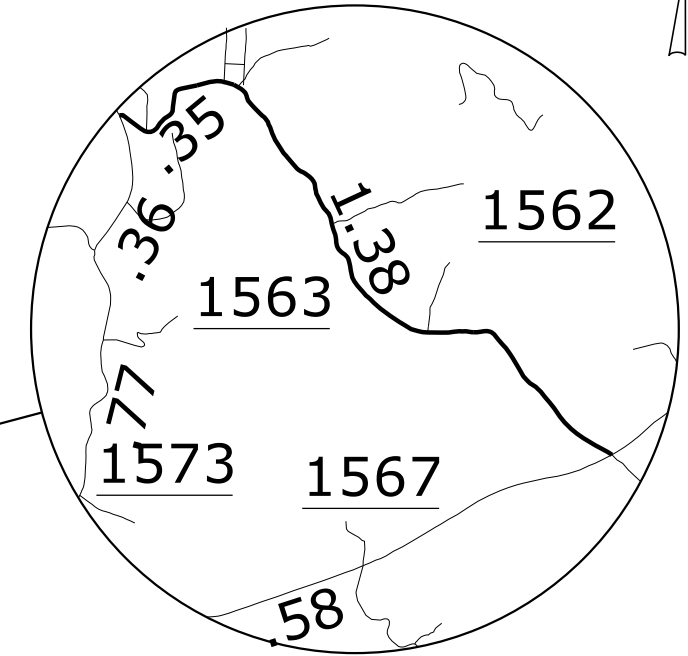
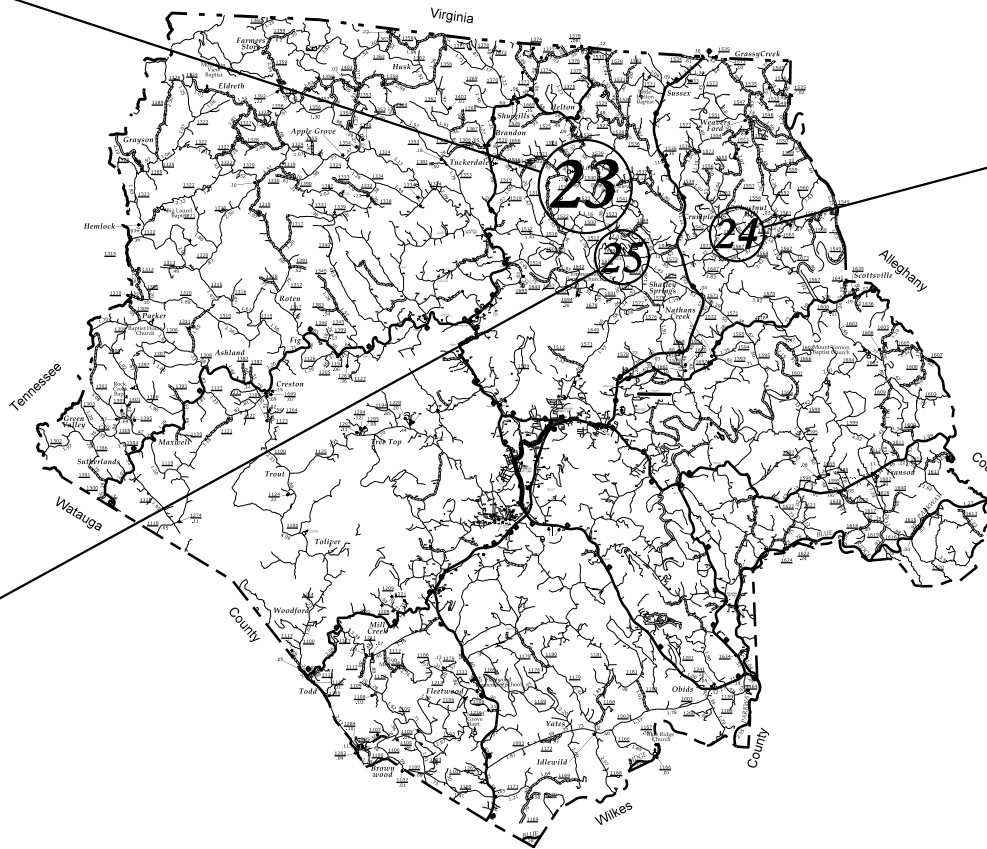
# ASHE COUNTY

2022 RESURFACING  
MAPS #23, #24 AND #25



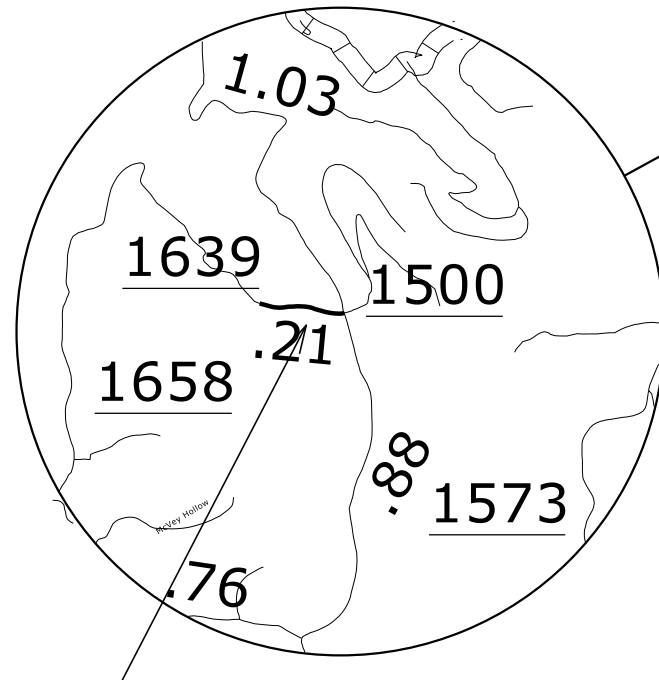
MAP #23

★ SR 1523 SILAS CREEK RD. - (3.01mi.)  
(FROM SR 1500 TO SR 1539)



MAP #24

★ SR 1563 CLIFTON RD. - (1.74mi.)  
(FROM SR 1567 TO SR 1573)



MAP #25

★ SR 1639 HOWELL RD. - (0.21mi.)  
(FROM SR 1500 TO EOM)

SYSTEMS  
DESIGN  
INC.  
1000  
S.W. 10th St.  
Gainesville, TX 76744  
TEL: 817-241-0000  
WWW.SDCI.COM

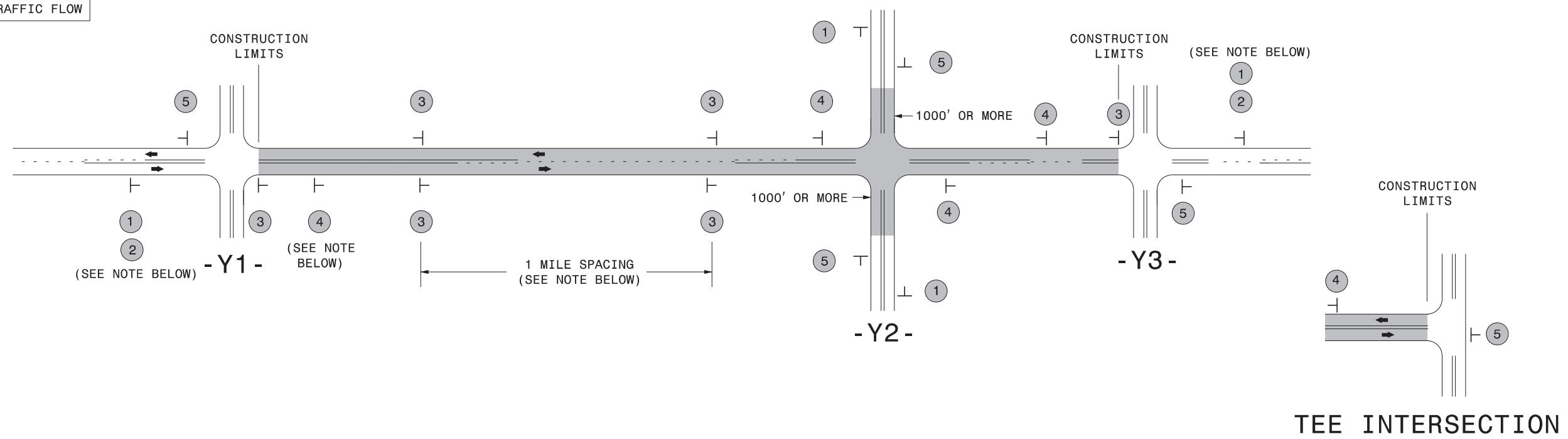


# SIGNING FOR RESURFACING PROJECTS

**LEGEND**

┆ STATIONARY SIGN

← DIRECTION OF TRAFFIC FLOW

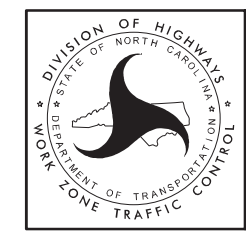


<b>SIGNING NOTES AND PLACEMENT PER DIRECTION</b>		<p>PLACE 1000' PRIOR TO BEGINNING OF CONSTRUCTION LIMITS. ONLY USED ON -Y- LINES IF RESURFACING LIMITS EXTEND 1000' ALONG -Y- LINE.</p> <p>#2 SIGN ONLY USED WHEN CONSTRUCTION LIMITS ARE 2 OR MORE MILES IN LENGTH. ROUND UP TO NEXT WHOLE NUMBER. (NO FRACTIONAL OR DECIMAL NUMBERS)</p>	<p><b>NO REQUIRED STATIONARY SIGNING FOR THE FOLLOWING -Y- LINE CONDITIONS:</b></p> <ol style="list-style-type: none"> <li>LESS THAN 1000' OF RESURFACING ALONG -Y- LINE</li> <li>SUBDIVISION ROADS</li> <li>DEAD END ROADS</li> </ol> <p>WHEN PAVING/CONSTRUCTION ACTIVITIES PROCEED ACROSS AN UNSIGNED -Y- LINE, PORTABLE ADVANCE WARNING SIGNS SHALL BE USED ALONG THE -Y- LINE AS SHOWN BELOW. REMOVE UPON COMPLETION OF WORK.</p> <div style="display: flex; justify-content: space-around;"> <div style="text-align: center;"> <p>PLACED 500' IN ADVANCE OF FLAGGER.</p> </div> <div style="text-align: center;"> <p>PLACED 250' IN ADVANCE OF FLAGGER.</p> </div> </div>
		<p>(SEE NOTE BELOW)</p>	
		<p>- PLACE INITIALLY AT THE CONSTRUCTION LIMITS AND SPACE 1 MILE APART THEREAFTER.</p> <p>- AT TEE INTERSECTIONS INSTALL INITIALLY 1/2 MILE FROM INTERSECTION AND SPACE 1 MILE APART THEREAFTER.</p>	
		<p>- THESE ARE FOR -Y- LINES THAT ARE "THROUGH" ROADWAYS.</p> <p>- DEAD END AND SUBDIVISION ROADS ARE NOT "THROUGH" ROADWAYS.</p> <p>- INSTALL 500' +/- FROM EACH -Y- LINE APPROACH AS SHOWN ABOVE.</p> <p>- FOR MULTIPLE -Y- LINES THAT ARE SEPARATED BY 0.25 MILES OR LESS, TREAT AS A SINGLE UNIT AND INSTALL WITHIN 500' OF EACH APPROACH.</p> <p>- A MAXIMUM OF 2 SIGN SETS PER MILE. DO NOT INSTALL WHEN -Y- LINES ARE WITHIN 0.5 MILES FROM "END ROAD WORK" SIGN.</p> <p>- FOR TEE INTERSECTIONS, INSTALL WITHIN 500' +/- OF THE INTERSECTION ALONG -L- LINE.</p>	
		<p>PLACE 500' FOLLOWING THE END OF CONSTRUCTION LIMITS OR AS SHOWN WHEN WORK ENDS AT A 3-WAY TEE INTERSECTION.</p>	

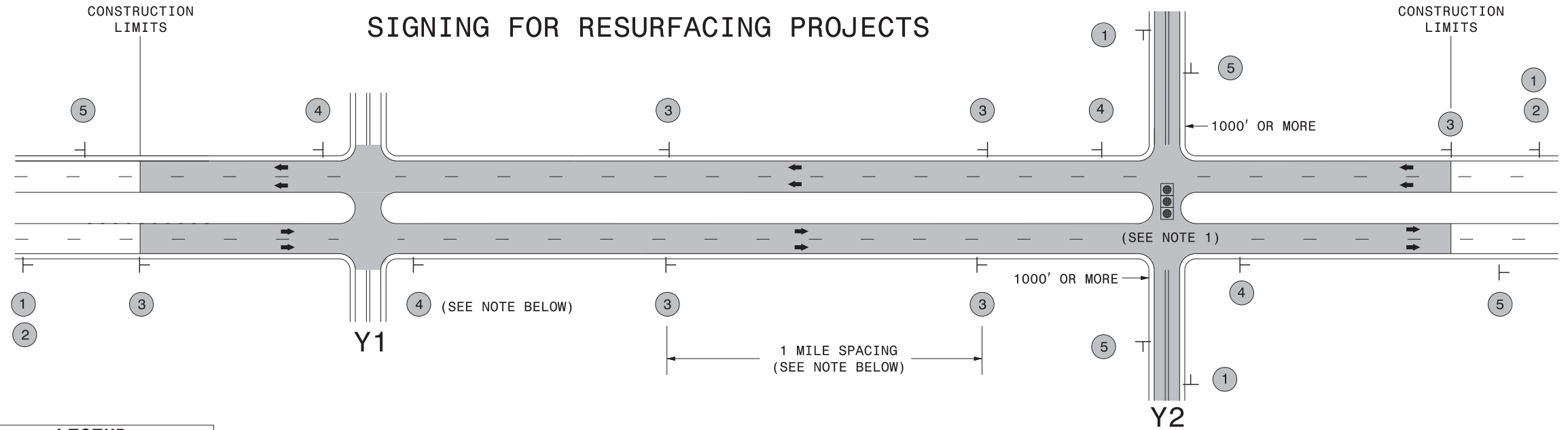
THE ABOVE SIGNS ARE ALL THAT ARE REQUIRED FOR A CONTRACTOR TO BEGIN A RESURFACING CONTRACT. ANY ADDITIONAL SIGNS REQUESTED BY NCDOT DIVISIONS SHALL BE INSTALLED WITHIN 7 BUSINESS DAYS OF THE START OF CONTRACT WORK.

**MAPS LESS THAN 2 MILES**

FOR RESURFACING MAPS WITH CONSTRUCTION LIMITS LESS THAN 2 MILES IN LENGTH, NO STATIONARY SIGNS ARE REQUIRED. USE PORTABLE "ROAD UNDER CONSTRUCTION" OR "ROAD WORK AHEAD" SIGNS IN LIEU OF STATIONARY ADVANCE WARNINGS SIGNS.



**ADVANCE WARNING SIGNS FOR RURAL AND SUBURBAN 2-LANE ROADWAY RESURFACING**



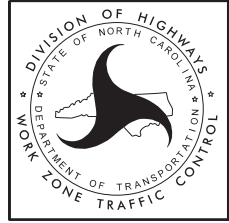
**LEGEND**  
 ┆ STATIONARY SIGN  
 ← DIRECTION OF TRAFFIC FLOW

**MAINLINE (-L-) SIGNING**

**-Y- LINE SIGNING**

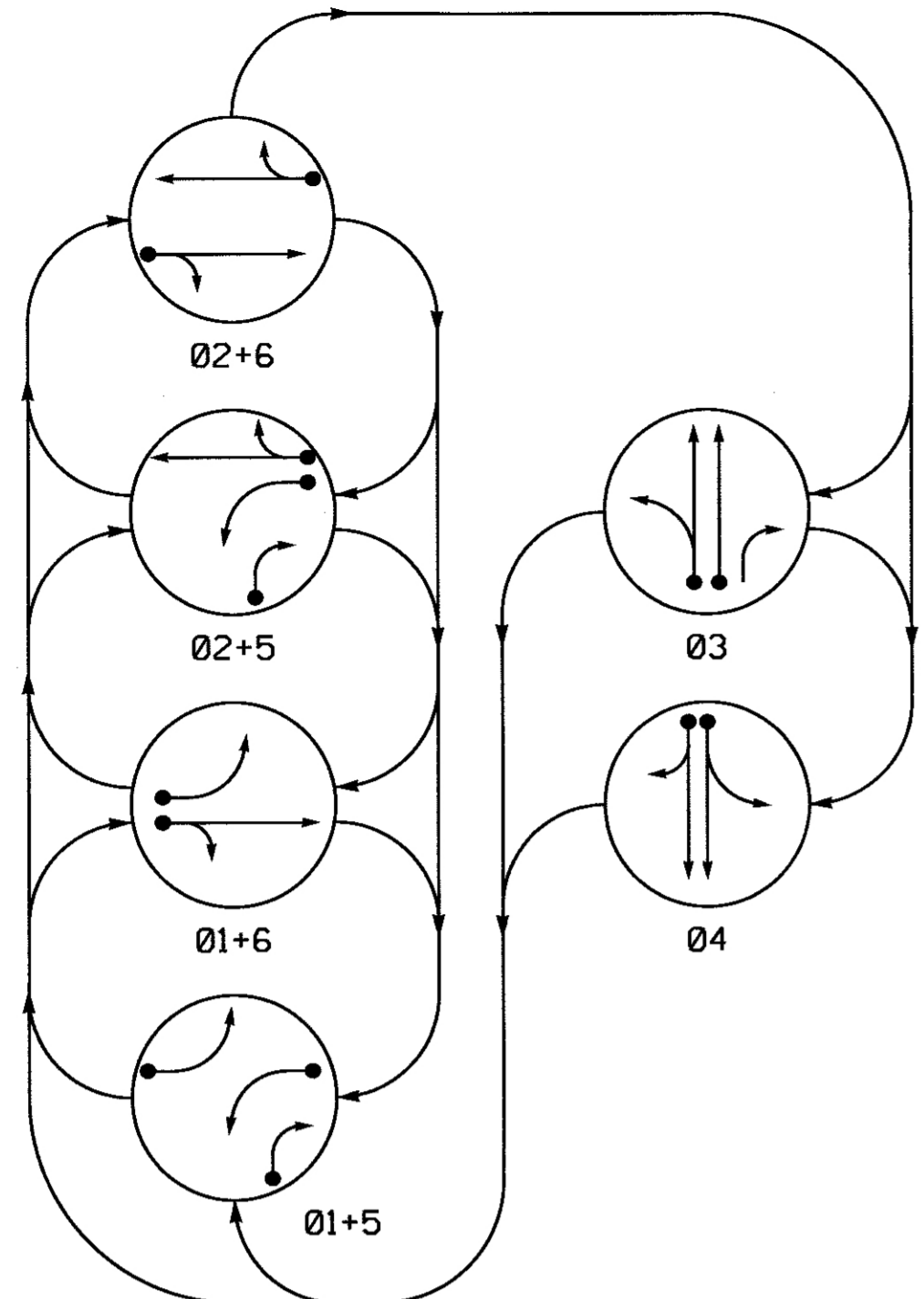
SIGNING NOTES AND PLACEMENT PER DIRECTION	 	<p>PLACE 1000' PRIOR TO BEGINNING OF CONSTRUCTION LIMITS. ONLY USED ON -Y- LINES IF RESURFACING LIMITS EXTEND 1000' ALONG -Y- LINE.</p> <p>#2 SIGN ONLY USED WHEN RESURFACING LIMITS ARE 2 OR MORE MILES IN LENGTH. ROUND UP TO NEXT WHOLE NUMBER. (NO FRACTIONAL OR DECIMAL NUMBERS)</p>	<p><b>NO REQUIRED STATIONARY SIGNING FOR THE FOLLOWING -Y- LINE CONDITIONS:</b></p> <ol style="list-style-type: none"> <li>1) LESS THAN 1000' OF RESURFACING ALONG -Y- LINE</li> <li>2) SUBDIVISION ROADS</li> <li>3) DEAD END ROADS</li> </ol> <p>WHEN PAVING/CONSTRUCTION ACTIVITIES PROCEED ACROSS AN UNSIGNED -Y- LINE, ADVANCE WARNING PORTABLE SIGNS SHALL BE USED ALONG THE -Y- LINE AS SHOWN BELOW. REMOVE UPON COMPLETION OF WORK.</p> <div style="display: flex; justify-content: space-around;"> <div style="text-align: center;">   <small>W20-1 48" X 48"</small> </div> <div style="text-align: center;">   <small>W20-7 A 48" X 48"</small> </div> </div> <p>PLACED 500' IN ADVANCE OF FLAGGER. PLACED 250' IN ADVANCE OF FLAGGER.</p> <p><b>NOTES:</b></p> <ol style="list-style-type: none"> <li>1) MAY USE LAW ENFORCEMENT TO CONTROL TRAFFIC AT SIGNALIZED INTERSECTIONS AS DIRECTED BY THE ENGINEER. PROVIDE PORTABLE "ROAD WORK AHEAD" (W20-1) SIGNS 500' IN ADVANCE ALONG BOTH APPROACHES FROM THE SIDE STREETS WHEN PAVING PROCEEDS THROUGH THE INTERSECTION.</li> </ol>
		<p>PLACE INITIALLY AT THE CONSTRUCTION LIMITS AND SPACED 1 MILE APART THEREAFTER. IF NO -Y- LINES EXIST, PLACE 2ND SET 1/2 MILE FROM THE CONSTRUCTION LIMITS AND THEN SPACE 1 MILE THEREAFTER.</p>	
		<p>THESE ARE FOR -Y- LINES THAT ARE "THROUGH" ROADWAYS. DEAD END AND SUBDIVISION ROADS ARE NOT "THROUGH" ROADWAYS. INSTALL 500' +/- FROM EACH -Y- LINE APPROACH AS SHOWN ABOVE. FOR MULTIPLE -Y- LINES THAT ARE SEPARATED BY 0.25 MILES OR LESS, TREAT AS A SINGLE UNIT AND INSTALL WITHIN 500' OF EACH APPROACH. A MAXIMUM OF 2 SIGN SETS PER MILE. DO NOT INSTALL WHEN -Y- LINES ARE WITHIN 0.5 MILES FROM "END ROAD WORK" SIGN.</p>	
		<p>PLACE 500' FOLLOWING THE END OF CONSTRUCTION LIMITS.</p>	

3/23/2015 C:\Users\rmgarrrett\Downloads\Resurfacing\_AdvWarn\_LrSu\_Shldr.dgn User:rmgarrrett



**RESURFACING ADVANCE WARNING SIGNS FOR RURAL AND SUBURBAN MULTI-LANE ROADWAYS W/ SHOULDER SECTIONS**

**PHASING DIAGRAM**



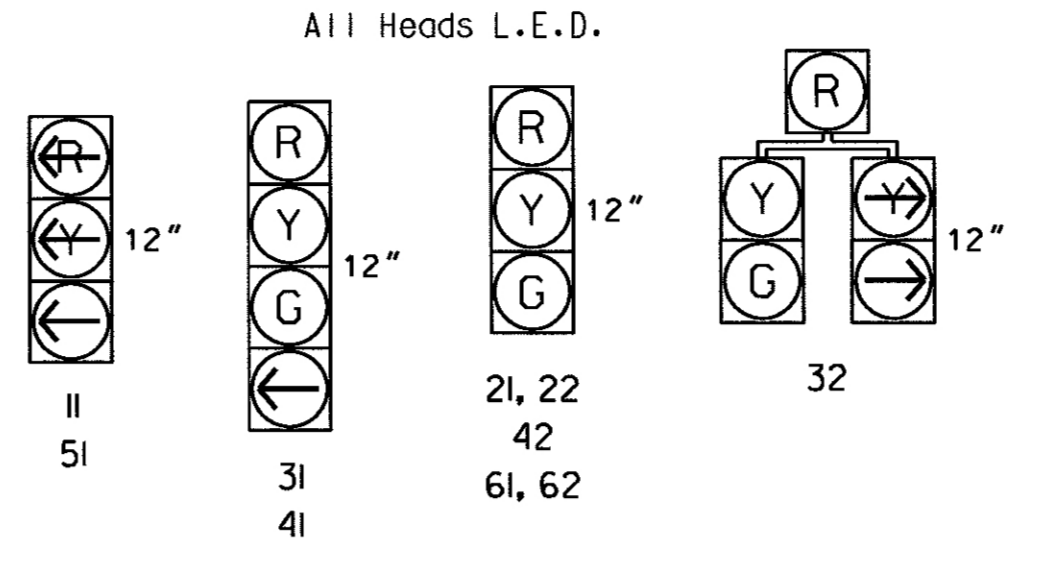
**PHASING DIAGRAM DETECTION LEGEND**

- ←●→ DETECTED MOVEMENT
- ←○→ UNDETECTED MOVEMENT (OVERLAP)
- UNSIGNALIZED MOVEMENT
- ←- - -> PEDESTRIAN MOVEMENT

**TABLE OF OPERATION**

SIGNAL FACE	PHASE					
	01+5	01+6	02+5	02+6	03	04
11	---	---	RR	RR	RR	RR
21,22	R	R	G	G	R	R
31	R	R	R	R	G	R
32	R	R	R	R	G	R
41	R	R	R	R	G	R
42	R	R	R	R	G	R
51	---	---	---	---	---	---
61,62	R	G	R	G	R	Y

**SIGNAL FACE I.D.**



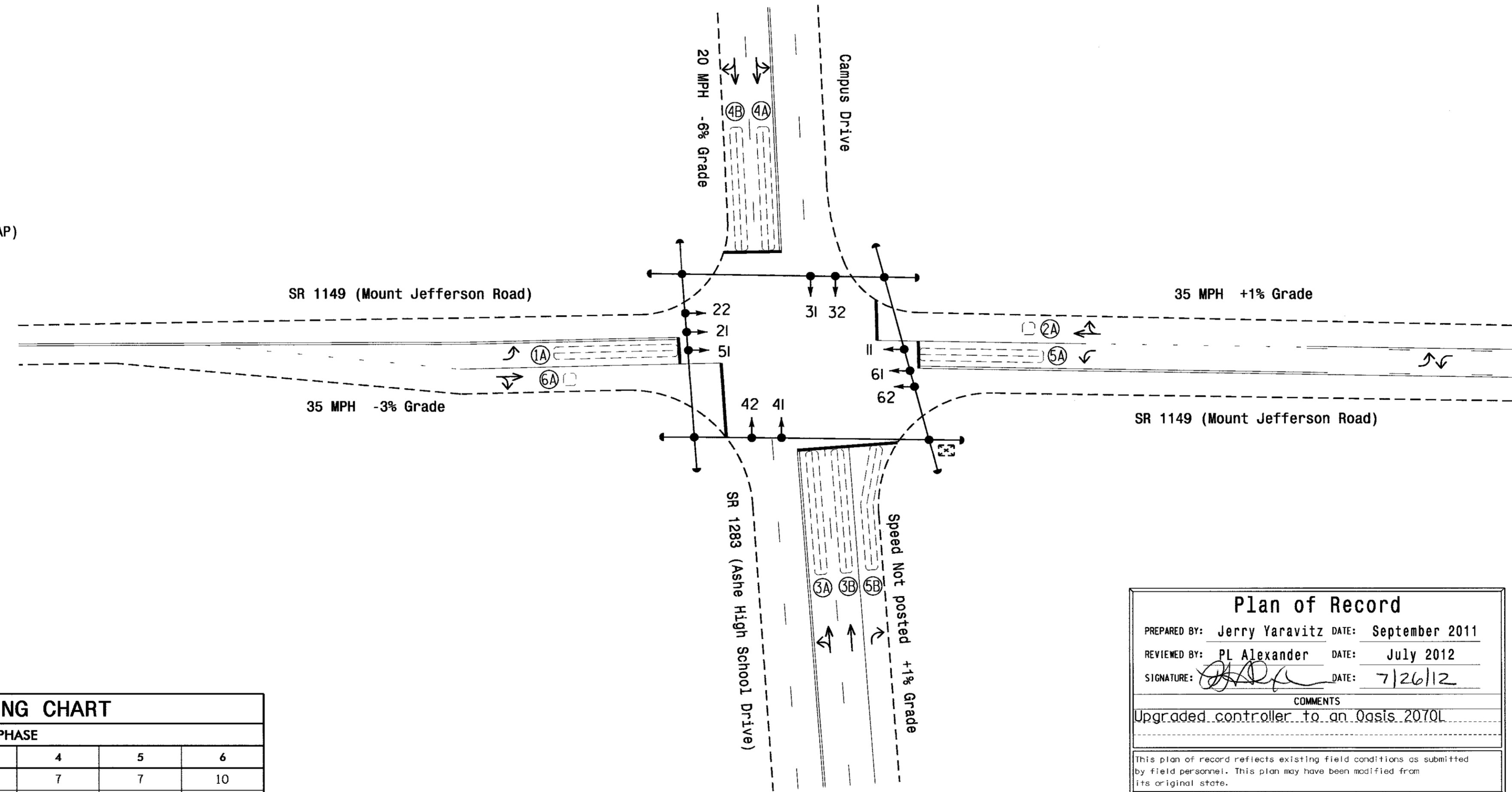
**OASIS 2070L LOOP & DETECTOR INSTALLATION CHART**

LOOP	SIZE (FT)	DISTANCE FROM STOPBAR (FT)	TURNS	DETECTOR PROGRAMMING								
				NEW LOOP	PHASE	CALLING	EXTENSION	FULL TIME DELAY	STRETCH TIME	DELAY TIME	SYSTEM LOOP	NEW CARD
1A	6X60	0	2-4-2	-	1	Y	Y	-	-	3	-	-
2A	6X6	70	3	-	2	Y	Y	-	-	-	-	-
3A	6X60	0	2-4-2	-	3	Y	Y	-	-	-	-	-
3B	6X60	0	2-4-2	-	3	Y	Y	-	-	-	-	-
4A	6X60	0	2-4-2	-	4	Y	Y	-	-	-	-	-
4B	6X60	0	2-4-2	-	4	Y	Y	-	-	10	-	-
5A	6X60	0	2-4-2	-	5	Y	Y	-	-	3	-	-
5B	6X60	0	2-4-2	-	5	Y	Y	-	-	15	-	-
6A	6X6	70	3	-	6	Y	Y	-	-	-	-	-

6 Phase Fully Actuated Isolated

**NOTES**

- Refer to "Roadway Standard Drawings NCDOT" dated January 2012 and "Standard Specifications for Roads and Structures" dated January 2012.
- Do not program signal for late night flashing operation unless otherwise directed by the Engineer.
- Phase 1 and/or phase 5 may be lagged.
- The order of phase 3 and phase 4 may be reversed.
- Set all detector units to presence mode.
- In the event of loop replacement, refer to the current ITS and Signals Design Manual and submit a Plan of Record to the Signal Design Section.



**OASIS 2070L TIMING CHART**

FEATURE	PHASE					
	1	2	3	4	5	6
Min Green 1 *	7	10	7	7	7	10
Extension 1	1.0	3.0	2.0	2.0	1.0	3.0
Max Green 1 *	15	30	45	45	15	30
Yellow Clearance	4.0	4.0	4.0	4.0	4.0	4.0
Red Clearance	1.5	2.5	2.0	2.0	1.5	2.5
Walk 1 *	-	-	-	-	-	-
Don't Walk 1	-	-	-	-	-	-
Seconds Per Actuation *	-	-	-	-	-	-
Max Variable Initial *	-	-	-	-	-	-
Time Before Reduction *	-	-	-	-	-	-
Time To Reduce *	-	-	-	-	-	-
Minimum Gap	-	-	-	-	-	-
Recall Mode	-	MIN RECALL	-	-	-	MIN RECALL
Vehicle Call Memory	-	YELLOW	-	-	-	YELLOW
Dual Entry	-	-	-	-	-	-
Simultaneous Gap	ON	ON	ON	ON	ON	ON

\* These values may be field adjusted. Do not adjust Min Green and Extension times for phases 2 and 6 lower than what is shown. Min Green for all other phases should not be lower than 4 seconds.

Contract DK00317:  
All existing loops size 6 X 60 shall be replaced with size 6 X 40, plans are for illustrative purposes only.

**Plan of Record**

PREPARED BY: Jerry Yaravitz DATE: September 2011  
 REVIEWED BY: PL Alexander DATE: July 2012  
 SIGNATURE: [Signature] DATE: 7/26/12

COMMENTS  
 Upgraded controller to an Oasis 2070L

This plan of record reflects existing field conditions as submitted by field personnel. This plan may have been modified from its original state.

**LEGEND**

PROPOSED	EXISTING
○ → Traffic Signal Head	● → N/A
● → Modified Signal Head	— Sign
⊥ Pedestrian Signal Head With Push Button & Sign	⊥ Signal Pole with Guy
⊥ Signal Pole with Guy	⊥ Signal Pole with Sidewalk Guy
⊥ Inductive Loop Detector	⊥ Inductive Loop Detector
⊥ Controller & Cabinet	⊥ Junction Box
⊥ 2-in Underground Conduit	⊥ Right of Way
→ Directional Arrow	→ Directional Arrow

**Plan of Record**

Prepared in the Offices of  
 Transportation Mobility and Safety Division  
 NORTH CAROLINA DEPARTMENT OF TRANSPORTATION  
 Signal Design Section

750 N. Greenfield Pkwy, Garner, NC 27529

SR 1149 (Mount Jefferson Road) at SR 1283 (Ashe High School Dr) / Campus Drive

Division 11 Ashe County West Jefferson

PLAN DATE: March 2001 REVIEWED BY: AL Grandy

PREPARED BY: JA Lohr REVIEWED BY:

SCALE: 1" = 40'

REVISIONS: [Table with columns for REVISIONS, INIT., DATE]

SIGNATURE: [Signature] DATE: [Date]

SIG. INVENTORY NO. II-1366

SEAL  
 Not a certified document. This document originally issued and sealed by James B. Vaso, PE # 022599 on 6/6/01. This document shall not be considered a certified document.